

Arthur Stanley House, London W1T

3,746 SQ FT TO 52,000 SQ FT OF OFFICE SPACE

This 52,000 square foot building which has been transformed into a BREAM excellent office space. ASH seamlessly merges the charm of 1960s architecture with cutting-edge post-Covid technology of the 21st century. Spanning across 10 floors, you have the option to lease the entire building or individual floors. Six of these floors feature outdoor areas, offering breath-taking views of central London.

Details

Current State	CAT A	
Term	60 months	
Price	£199.00 per sq ft*	
	SQ FT	Terrace SQ FT
7th Floor	4,025	1,001
6th Floor	5,134	172
5th Floor	5,360	172
4th Floor	5,597	172
3rd Floor	5,834	172
2nd Floor	6,243	-
1st Floor	6,114	-
Ground	4,198	-
Reception	969	-
LP1	3,746	-
LP2	4,833	156
Total	52,053	1,845

*Pricing is for indicative purposes only and based on market assumptions and leasing terms. Services will be fully reviewed upon application





Amenities

72 Bike spaces & lockers	Exposed AC
BREAM 'excellent'	8 Private showers
Terraces	Floor-ceiling 2.6m – 3.7m
Natural Ventilation	Sustainable development
Private Entrance	Solar Panels
Smart App Energy Consumption Monitoring	Air Quality Assessment



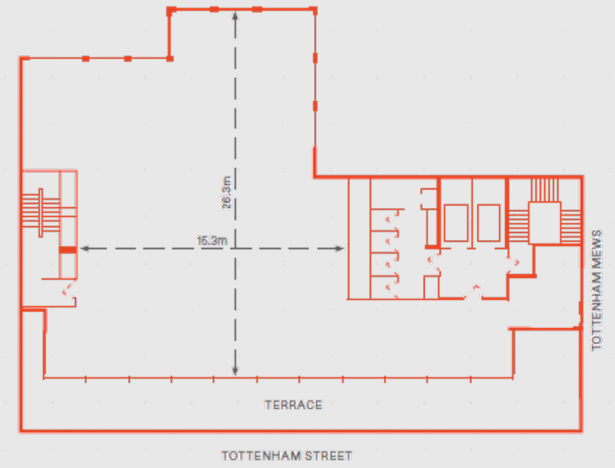
Floor Plan



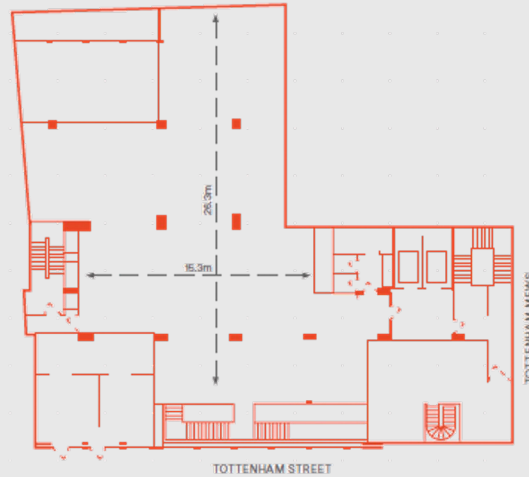
TYPICAL FLOOR
5,834 SQ FT
TERRACE 172 SQ FT



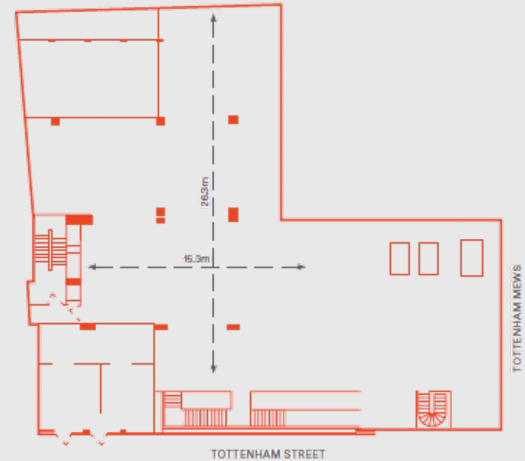
GROUND FLOOR
4,198 SQ FT



SEVENTH FLOOR
4,025 SQ FT
TERRACE 1,001 SQ FT












LOWER PENTHOUSE 1
3,746 SQ FT



LOWER PENTHOUSE 2
4,833 SQ FT

Management services & more...

Get in touch to find out more about our packages that you can customise to your business needs.

 Account Management	 Cleaning Services	 Health & Safety Management
 Facilities Management	 Hospitality & Catering	 Technology
 Fit-Out	 Treasury	 Additional Bespoke Services

Contact Made

Hugo Morrissey

Managing Director

T: +44 (0)7894229796

E: hugo.Morrissey@made-re.com