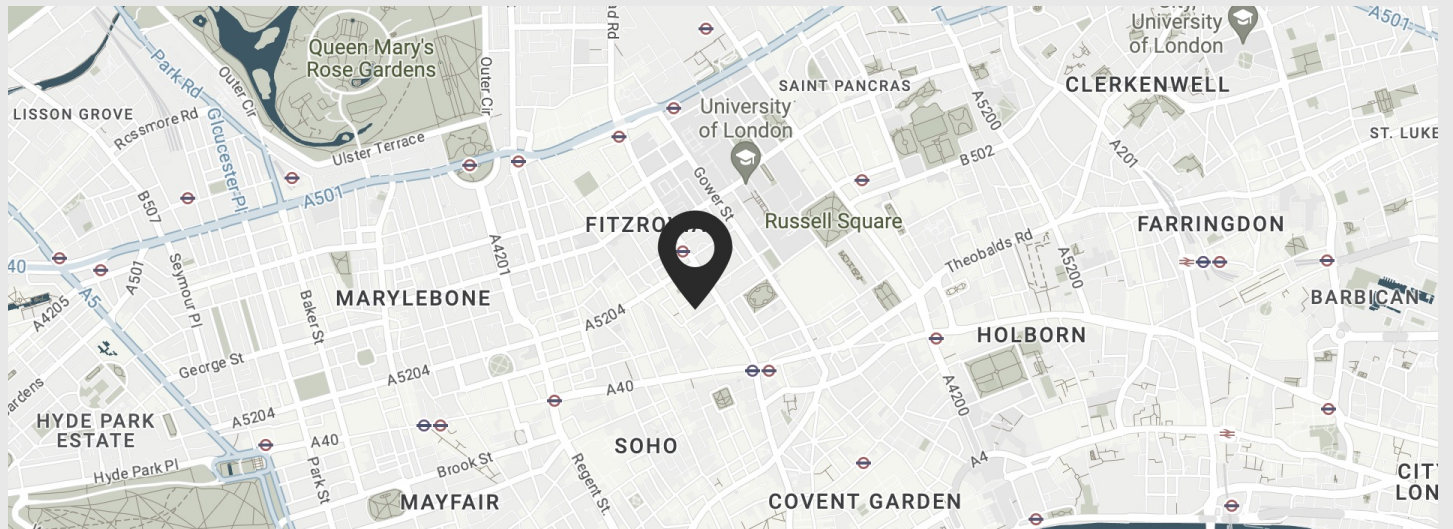


Made

10 Whitfield Street, London W1

TWO FLOORS UP TO 9,252 SQ FT WITH CAT A
AND FULLY FITTED OFFICE ACCOMMODATION

Nestled in Fitzrovia's vibrant core, 10 Whitfield Street showcases 9,252 square feet of Grade A office space, ideal for creative pursuits. Situated in one of London's most sought-after locales, the premises boast a stylish reception area recently enhanced for an improved arrival experience. Available space features both newly refurbished Cat A amenities and fully fitted accommodations.



Details

Size (1st floor)	4,356 sq ft
Size (2nd floor)	4,896 sq ft
Floor	1 st & 2 nd
Term	60 months
Current State	Fully fitted (1 st floor) CAT A (2 nd floor)
Price	£173.00 per sq ft*



*Pricing is for indicative purposes only and based on market assumptions and leasing terms. Services will be fully reviewed upon application





Amenities

Full height glazing

New Showers

Underfloor air-conditioning

24 hr access

2 x 8-person lifts

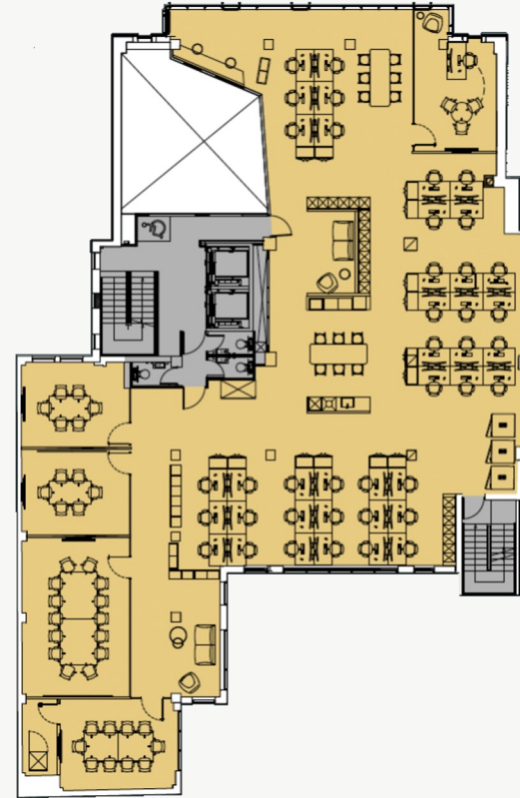
Bicycle storage

Newly refurbished reception

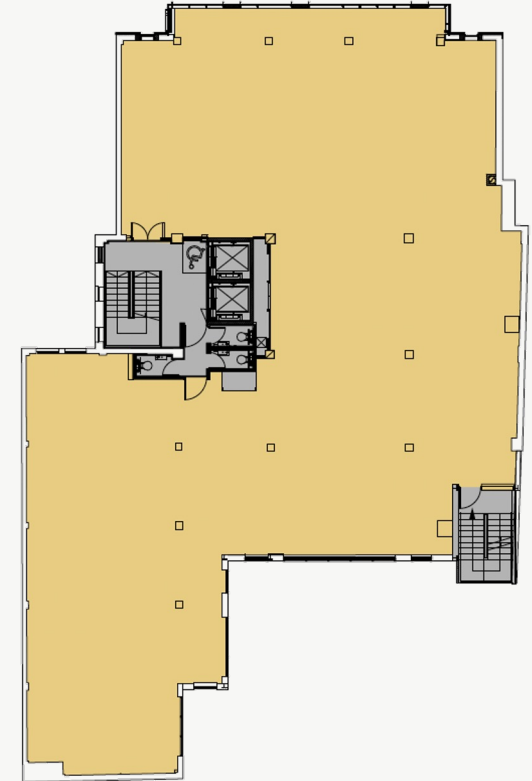
Newly refurbished CAT A space

Linear LED lighting

Separate rear access












1st floor



2nd floor

Management services & more...

Get in touch to find out more about our packages that you can customise to your business needs.

 Account Management	 Cleaning Services	 Health & Safety Management
 Facilities Management	 Hospitality & Catering	 Technology
 Fit-Out	 Treasury	 Additional Bespoke Services

Contact Made

Hugo Morrissey

Managing Director

T: +44 (0)7894229796

E: hugo.Morrissey@made-re.com